

Sangaree Holiday Schedule - Office Closures 2022

Monday, January 3, 2022	New Year's Day Observance
Monday, January 17, 2022	Martin Luther King, Jr. Birthday Observance
Friday, April 15, 2022	Good Friday Observance
Monday, May 30, 2022	Memorial Day Services moved to Wed & Thurs.
Monday, July 4, 2022	Independence Day Services moved to Wed & Thurs.
Monday, September 5, 2022	Labor Day Services moved to Wed & Thurs.
Friday, November 11, 2022	Veteran's Day
Thursday & Friday, November 24-25, 2022	Thanksgiving Holidays
Friday, Monday, Tuesday, December 23, 26, 27	Christmas Holidays

RESIDENTS & RESIDENT GUESTS - PLEASE DO NOT BLOCK ACCESS TO CURBSIDE ITEMS ON SERVICE DAYS. YOU OR YOUR NEIGHBORS WILL NOT BE SERVICED.

Office Phone: 843-871-9720 www.sangareesubdivision.com

Office Address: 102 Sangaree Park Ct, Ste. 1; Summerville, SC 29486

THE SANGAREE SOURCE

FEBRUARY - MARCH - APRIL 2022 | SANGAREE SPECIAL TAX DISTRICT

843-871-9720 | WWW.SANGAREESUBDIVISION.COM



Your Community Needs You!

Would you like to make a difference in your home community of Sangaree? Do you have a passion for your community and the people who live here? Do you have an interest in serving on the Sangaree Special Tax District Advisory Commission (SSTDAC)?

Sangaree has 20 subdivisions, six parks & playgrounds, one developing multifunctional park, 34 entrances including subdivisions, and 40 green space properties of various shapes, sizes, and types.

The SSTDAC is looking for those Sangaree residents who would like to take an active part in our Sangaree community by becoming a Commissioner or an Alternate Commissioner.

Volunteer resident property owners are appointed by Berkeley County Council to serve on the SSTDAC. The Commission advises Berkeley County Council of the nature and level of services desired by the citizens within the district. The additional services are provided by the use of the County employees and equipment or by contract with private agencies approved by Berkeley County Council. For more information, contact Councilman Tommy Newell at the email listed below. tommy.newell@berkeleycountysc.gov

SANGAREE SCHEDULE OF SERVICES 2022

RESIDENTS & GUESTS ARE ASKED TO NOT BLOCK TRASH CARTS, BULK, OR YARD DEBRIS ON SERVICE DAYS. IF SERVICE VEHICLES CAN NOT ACCESS YOUR CONTAINERS OR DEBRIS, YOU CAN NOT BE SERVICED.

ROUTE 'A' SUBDIVISIONS

Hampton Trace Victoria Place
Indian Woods Village
Spring Lake Village
Stratford Downs

Monday - Home Electronics (E-Waste), Appliances and other Metal, and Chipping (limbs, branches, and trunks not exceeding 4 inches in diameter.

Tuesday - Chipping continues if necessary.

Wednesday - Household Garbage in roll carts. Extras bags on or around the cart will not be removed.

Wednesday - Bulk Furniture, Mattresses, tables, etc. Loose Yard Waste (grass clippings, leaves, pine straw, fine prunings) contained in paper bags or cans labeled yard waste; Chipping continues if necessary.

**Sangaree Office Phone
843-871-9720**

ROUTE 'B' SUBDIVISIONS

Carriage Crossing
Cobblestone Ridge
Cobblestone Ridge Townhomes
The Cove Raintree
Lyon's Cove Sangaree Gardens
Partridge Creek Pebble Creek
Prestwick Traders Station
Woodbridge Village
Highland Village
Tabby Creek Village Green

Monday - Home Electronics (E-Waste), Appliances and other Metal, and Chipping (limbs, branches, and trunks not exceeding 4 inches in diameter.

Tuesday - Household Garbage in roll carts. Extras bags on or around the cart will not be removed.

Wednesday - Bulk Furniture, Mattresses, tables, etc. Loose Yard Waste (grass clippings, leaves, pine straw, fine prunings) contained in paper bags or cans labeled yard waste; Chipping continues if necessary.

PROPER PLACEMENT OF LIMBS FOR COLLECTION

This service is provided for the residents as you trim trees.

The service begins on Mondays. Limbs **not exceeding four inches in diameter** will be collected. Limbs will be chipped into a truck. Please, cut out forks, stack in an orderly pile not exceeding 4 feet high, with the cut ends towards the street.

This allows for safe curbside collection. Employees are not permitted to enter private property.

Large quantities of limbs may be stacked in multiple, smaller piles or a continuous row. Do not mix yard debris and root balls with your limbs.

These items should be placed separately. Do not pile your debris on neighboring properties or public spaces. This considered illegal dumping and is a fineable offense.



DISPOSING OF YARD & TREE DEBRIS

Yard Waste includes plant material removed from **YOUR YARD ONLY**. Such items include grass clippings, leaves, pine needles, pine cones, and trimmings from plants.

The collected items **MUST** be bagged in biodegradable **PAPER** bags or placed in a container, such as a trash can, clearly marked "YARD WASTE".

NO PLASTIC BAGS

Regulations prohibit the use of the same container for household trash and yard waste. Contained loose yard waste cannot exceed **65 pounds each**. Containers without lids **MUST** allow for drainage of rain water.

Bricks, loose dirt, treated wood or concrete edging, stones/rocks are **NOT** considered Yard Waste and must be disposed of by the owner/landlord. Lawn furniture, fixtures, or decorations should be placed at curbside and collected with other Bulk items on Wednesdays.

TRASH SERVICE

Place trash cart, yard debris, or allowed items at curbside **NO LATER THAN 6:30 AM** on your service days.

MISSED SERVICE

If your contracted trash or yard debris is missed, you must contact the Sangaree Office **NO LATER THAN 10:30am** the next business day to schedule make-up service.

SERVICE RECORDS

Trucks are equipped with cameras to determine if staff completed all stops on the route and whether or not carts were at curbside at time of service.

OLD TRASH CARTS

Please place **ALL** old trash carts at curbside for collection. If you are using a cart for Yard Debris, IT **MUST BE MARKED**.

Renovation & Home Projects

Please consider renting a roll-off container to dispose of your renovation, construction, and large remodel debris. Sangaree crews and contractors are not permitted to remove this debris from your property. This is also recommended for whole house clean outs such as an eviction.

All Berkeley County residents can use the multiple Convenience Centers located around Berkeley County. The nearest location to Sangaree is located at 606 Oakley Road in Moncks Corner.

Second Carts are Available

Additional carts from CWS for \$7.00 per month. To order an additional trash cart call 843-553-2004.

Convenience Centers

The following locations are OPEN 7 a.m. to 6 p.m. Mondays, Tuesdays, Thursdays, Fridays, Saturdays; **CLOSED Wednesdays and Sundays.**

- Poplar Hill - 1029 Poplar Hill Road, Ridgeville, 29472
- Pineville - 1818 Hwy. 45, Pineville, 29468
- Savanna Creek - 3663 N. Hwy. 17-A, Bonneau, 29431
- Charity Church - 1430 Charity Church Road, Huger, 29450
- Oakley Road- 606 Oakley Road, Moncks Corner, 29461

The remaining locations are OPEN 7 a.m. to 6 p.m. Mondays, Tuesdays, Wednesdays, Fridays, Saturdays; **CLOSED Thursdays and Sundays.**

- Ranger Drive - 2163 Ranger Drive, Cross, 29436
- Gravel Hill Road - 1025 Gravel Hill Road, Bonneau, 29431
- Shulerville - 2115 Shulerville Road, Jamestown, 29453
- Alligator Road- 1078 Alligator Road, Cordesville, 29434



🎄 SANTA AT THE POND 🎄

The Sangaree tradition of Santa at the Pond was a fantastic event once again. Mrs. Crystal Bagley, with a great team of two neighbor volunteers, Kathy and Kimberly, coordinated a wonderful day for the families of Sangaree. There were family friendly activities, Sangaree Elementary, the Fire Department, Food Trucks, and **Santa & Mrs. Claus** stopped by for visits with the children and a few pictures, too! Mrs. Bagley was thrilled so many Sangaree Neighbors came out to celebrate the season as a community. If you are interested in helping with the Santa at the Pond event in the future, please contact Mrs. Crystal Bagley via the Sangaree social media pages. Check out some of the fun.....





🎄 SEE YOU NEXT YEAR! 🎄

Cambridge Park is Finished!

The final touch was put on Cambridge Park Playground in early January. Soft Landing was applied as the top surface under the new equipment installed in late 2021.

The playground area is now fully ready for use by the young children of our community. Cambridge Park, like the other five parks located in Sangaree are open for use by residents of Sangaree. Be mindful that the playground equipment is designed for use by young children under 12.



SANGAREE COMMUNITY UPDATES

Sangaree Park Basketball Court

Work continues on the new Basketball Court recently poured at Sangaree Park. The wooden forms have been removed and the

temporary fencing will be coming down as crews work to level the immediate ground area around the court. SSTD

is hoping for a target completion time of Spring. The posts and goals will be installed in the coming weeks. Quotes are being accepted for line painting on the court, and purchase & installation of lights. When completed, the area will have a few park benches, landscaping and lighting for extended play.

A Friendly reminder...
Automobiles, motorized vehicles, recreational vehicles, trailers, etc., are not permitted on the grounds of Sangaree Park and other Green Spaces within Sangaree. Thank you.

**Framing
and
Pouring
is
COMPLETE!**



Berkeley County Sheriff's Office Substation Welcome to Sangaree!

The substation renovation is now complete. Deputies and other officers from the department will be able to have a presence within Sangaree as they work their shifts in this area of Berkeley County. The substation is located near the Sangaree Shop and by the water tower on Sangaree Parkway.



**HELP
KEEP
SANGAREE
CLEAN!**



**PLEASE
DON'T
LITTER**

NOW, THAT'S A GOOD SIGN!

Subdivision sign upgrades have begun at various entrances in Sangaree. Time, weather, and other situations have taken a toll on the signs around our neighborhood. Beginning September 2021, Sangaree committed to repair, repaint, or replace all the subdivision entrance signs. The condition of each sign will be evaluated and the right steps will be taken based on need. The response has been fantastic! The positive feedback given to the staff working on this project, whether coming through the office or from neighbors passing by, is very much appreciated. This process will continue over several years as it coincides with the current street sign replacement program already in place. A few of the subdivisions have already received the upgraded street signs and the response has been fantastic. As always, if a sign needs replacing due to unforeseen circumstances, that will be addressed as soon as possible. Check out some of the work so far!



WHAT'S COMING & YOU CAN HELP...

Sangaree Community Meeting - Tuesday, February 1, 2022 - 7:00PM - The Sangaree Special Tax District Advisory Commission will host a ZOOM Quarterly Public meeting for residents. To log on go to the following link:

<https://us06web.zoom.us/j/84824433341?pwd=Rk91K2w1Q0ZETIV5NkVVaVZzQXRmUT09>

Meeting ID: 848 2443 3341 **Passcode:** 708408 Or **Dial-in to** (301) 715-8592

Sangaree Community Easter Egg Hunt at the Pond - Friday, April 1, 2022 5:30 - 7:30 pm

Don't forget to bring you baskets & enjoy the Food Trucks, too! Volunteers are NEEDED to hide eggs at 30 minute intervals. Plastic Easter Eggs and small candy to fill eggs are needed and can be donated at the Sangaree Office no later than Friday, March 11.

Sangaree Community Yard Sale - Saturday, April 23, 2022 - Call the Office to register no later than Thursday April 21 at noon. Yard Sale begins at 8:00am each participating resident may end when they choose. (Rain date of Saturday, April 30, 2022)

Food Truck Fridays at the Pond - Each Friday evening from 5:30 - 8:00 pm

Food Truck Saturdays - Every third Saturday of the month February 19, March 19, April 23 (4th Saturday), May 21, and June 18 starting at 4:30PM. Come on out and bring your appetite!! See you there!

JUST A FEW MORE THINGS...

Later this year..

There are a few Community Events that are hopeful for later this year. Two of these are a Halloween event and Community Day. Much help will be needed so please consider supporting these events and contact your SSTD Advisory Commission to **VOLUNTEER**. The Sangaree Advisory Commission and Volunteers work hard to plan and present events for the families of Sangaree. Please consider volunteering to lend a hand to activities that provide so much for our community.

SANGAREE'S YOUNG VOLUNTEERS

Sangaree Salutes some of its youngest residents - Bailey, Izzy, and Kayla. They each received Golden Grabber recognition from Berkeley County at the January County Council Meeting. These three awesome volunteers were taking part in "Keeping Berkeley Beautiful" by picking up trash in their community. These girls are great representatives of Sangaree. Berkeley County is proud of these young volunteers and Sangaree is, too! **Thank you Bailey, Izzy, & Kayla!**



WORD ON THE STREET...

Roads in Sangaree

The Sangaree Special Tax District has 141 roads, some of which are State Roads which means the roads are maintained by the state of South Carolina. The other roads are maintained by Berkeley County. Road issues on state roads such as potholes, wash outs, or sink holes can be reported directly to the state at <http://dbw.scdot.org/workrequest/> or to the Sangaree Office

To report an issue about a county maintained road, please call the Sangaree office. 843-871-9720 Below is the list of state roads within Sangaree:. If you do not see you road listed, it is a Berkeley County maintained road.



Beauregard Road
 Chestnut Court
 Coney Court
 East Gustave Court
 Edward Court
 General Dennis Drive
 Hampton Drive (1101 - 1122 block only)
 Kershaw Road

Longstreet Street (100 - 700 block only)
 Marclay Court
 Pierre Court
 Royle Road
 Toutant Court
 Trenholm Drive
 Wade Court
 West Gustave Court

Damage to Signage within Sangaree

If you see damage to any signage within the Sangaree community, please report it to the Sangaree Office as soon as possible. The office will determine who to contact for repair or replacement. Office Phone: 348-871-9720

Blocking Street Signage with Shrubs & Foliage

Please keep your bushes and plants trimmed so signage that is placed on your property is not obstructed. Signs should be visible without affecting a driver's line of sight. This includes street signs as well as traffic control signage. Thank you!

Just a reminder...

Before Spring comes when everything is in bloom and the days are warmer, it may be a good idea to trim the branches and prune the shrubs. The Sangaree Special Tax District and contractors provide collection for yard debris and branches.

SANGAREE MAINTAINED GREEN SPACES AND CUL-DE-SAC ISLANDS ARE NOT INTENDED FOR PARKING VEHICLES, BOATS, CAMPERS, TRAILERS, OR OTHER MOTORIZED EQUIPMENT. SANGAREE STAFF WILL BE INSTALLING NO PARKING SIGNS BEGINNING THIS SPRING. THANK YOU FOR YOU COOPERATION AS WE WORK TO KEEP SANGAREE GREEN SPACES GREEN.



SANGAREE LIBRARY HAS YOUR RESOURCES FOR FUN, CREATIVITY & RELAXATION!



Mon - Thurs 10 am - 6 pm
Fri & Sat 9 am - 5 pm
595 Sangaree Parkway
Summerville

FEBRUARY - APRIL TAKE HOME CRAFTS

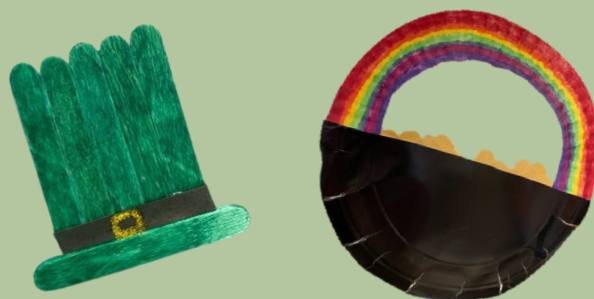
FEBRUARY

Create your own slice of a master pizza and a Heart Crown to wear on Valentine's Day!



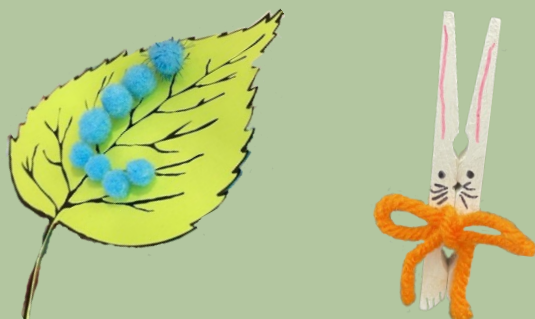
MARCH

March into St. Patrick's Day with a Leprechaun hat and a paper plate pot of Gold!



APRIL

Create a clothespin bunny for Easter and a Caterpillar on a leaf to celebrate spring!



IN-PERSON EVENT

WRITER'S NEST

Join other aspiring writers to unwind and create together. They meet every third **Saturday at 11:00 am**. All participants will now be required to provide a vaccination card to attend per group leader's request.



SANGAREE LIBRARY PATRONS LOVE THEIR NEIGHBORHOOD LIBRARY!

The Berkeley County Library Sangaree Branch is perfectly located right in the heart of Sangaree. For 15 years, the library has kept a fantastic selection of children’s books as well as great offerings for tweens and teens. The Adult section has an assortment of many fiction, non-fiction, biographical choices, and more. New books come in weekly. There is an even larger variety available from the other branches of the Library System. Simply visit the Sangaree Branch, look-up or research the material of interest and the friendly and informed staff will help you find what you’re looking for and have it sent right to Sangaree for your convenient check-out!

Do you need some ideas for a weekend movie night at home? The library has hundreds of DVD selections for you to choose from. Library patrons can also instantly borrow free digital movies, music, and audiobooks 24/7 with no waiting! Games for X-Box and PlayStation are also available to borrow. There are dozens of on-line databases available for books, elementary, middle, high school, and collegiate learning.

If you do not have a library card, stop by and get one today. Sangaree library is right here in your neighborhood! Come in and check it out!

CUSTOMER TESTAMONIALS



“The staff here are always so friendly and helpful. I love coming here.”

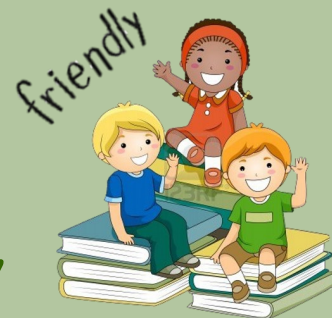


“If it wasn’t for the library, I wouldn’t be able to read all these wonderful books.”

“The best part about having the library right here in Sangaree - I can walk to it!”

A Sample of Services Available:

- ◆ On-line tutoring
- ◆ Services for Veterans
- ◆ On-line classes for job hunting and career prep
- ◆ Ancestry Research



THANK YOU SANGAREE LIBRARY TEAM!



@ berklibsc



@ BerkeleyLibrarySC



@ bcls

HELPFUL COMMUNITY CONTACT INFORMATION:

- ◆ Sangaree Special Tax District Office 843-871-9720
- ◆ Berkeley County Sheriff's Non-Emergency Number and Tips - 843-719-4465
- ◆ Berkeley County Library Sangaree Branch - <http://berkeleylibrarysc.org/> 843-695-1208
- ◆ Berkeley County Government - <http://www.berkeleycountysc.gov/> 843-761-6900
- ◆ Berkeley County School District - <http://www.bcsdschools.net/> 843-820-4090
- ◆ Berkeley County School Bus Supervisor - 843-899-8697
- ◆ Sangaree Elementary School - <http://www.bcsdschools.net/SRE> 843-820-3868
- ◆ Sangaree Intermediate School - <http://www.bcsdschools.net/SRI> 843-820-3850
- ◆ Sangaree Middle School - <http://www.bcsdschools.net/SRM> 843-821-4028
- ◆ Stratford High School - <https://www.bcsdschools.net/Domain/44> 843-820-4000
- ◆ Cane Bay High School - <https://www.bcsdschools.net/Domain/17> 843-899-8786
- ◆ AT&T - <http://www.att.com/> 800-288-2020
- ◆ Comcast/Xfinity - <https://www.xfinity.com>
- ◆ SPECTRUM - <https://www.spectrum.com/> 866-892-7201
- ◆ SC DHEC - <http://www.scdhec.gov/> 803-898-3432
- ◆ C&B Fire Department - 843-873-0714
- ◆ Pine Ridge Fire Department - <http://www.pineridgefd.org/> 843-875-1822
- ◆ Berkeley Electric Coop. - <https://www.berkeleyelectric.coop/> 843-761-8200 OR 843-553-5020
- ◆ Berkeley Animal Center- <https://animalcenter.berkeleycountysc.gov/> or 843-719-5050
- ◆ Berkeley County Water & Sanitation - <https://bcws.berkeleycountysc.gov/> 843-761-8817
- ◆ Berkeley County Landfill - 843-572-4400
- ◆ Berkeley County Outdoor Burning Permits - 800-895-7063
- ◆ Berkeley County Animal Control - 843-719-4210
- ◆ Berkeley County Code Enforcement - 843-719-4758
- ◆ Palmetto Pride - Witnessing Litter 877-754-8837 (Must have license tag number)
- ◆ Berkeley County Roads and Bridges - 843-719-4129

REV. 02-2022

THANK YOU SANGAREE SPECIAL TAX DISTRICT ADVISORY COMMISSIONERS!

Commissioner Drew Haueisen - Chairman	aehaueisen@gmail.com
Commissioner Michael Bagley - Co Chairman	mbagley.sangaree@gmail.com
Commissioner Jeannie Beard - Secretary	jeannieb@sc.rr.com
Commissioner Ann Birch	acbirch01@yahoo.com
Commissioner Patricia Temple	applelady51@yahoo.com
Commissioner Harold Green (Alternate)	haroldgreen44.hg@gmail.com
County Councilman Tommy Newell	tommy.newell@berkeleycountysc.gov

The Sangaree Source –February 2022
Sangaree Special Tax District
102 Sangaree Park Ct. Suite1
Summerville, SC 29486



The Sangaree Office and Shop will be closed Friday, April 15 in Observance of Good Friday.

An illustration of a bright, sunny spring landscape with rolling green hills, a winding path, and a bright sun in the sky.

FRIDAY, APRIL 1
5:30PM
DETAILS INSIDE!

Easter

EGG HUNT

A graphic for an Easter egg hunt featuring several colorful Easter eggs (purple, pink, and yellow) at the bottom, with butterflies and a green background with yellow sparkles.

DETAILS INSIDE!

COMMUNITY YARD SALE

SANGAREE

SATURDAY, APRIL 23
8:00 AM - UNTIL

CALL THE OFFICE TO REGISTER
843-871-8720

A graphic for a community yard sale featuring a wooden background, a string of brown paper tags with the word 'SANGAREE' written on them, and a red banner at the bottom with contact information.