

Berkeley County

Hurricane

Guide

2022

**HURRICANE SEASON:
JUNE 1 - NOVEMBER 30**

- **BUILD A KIT**
- **MAKE A PLAN**
- **BE INFORMED**



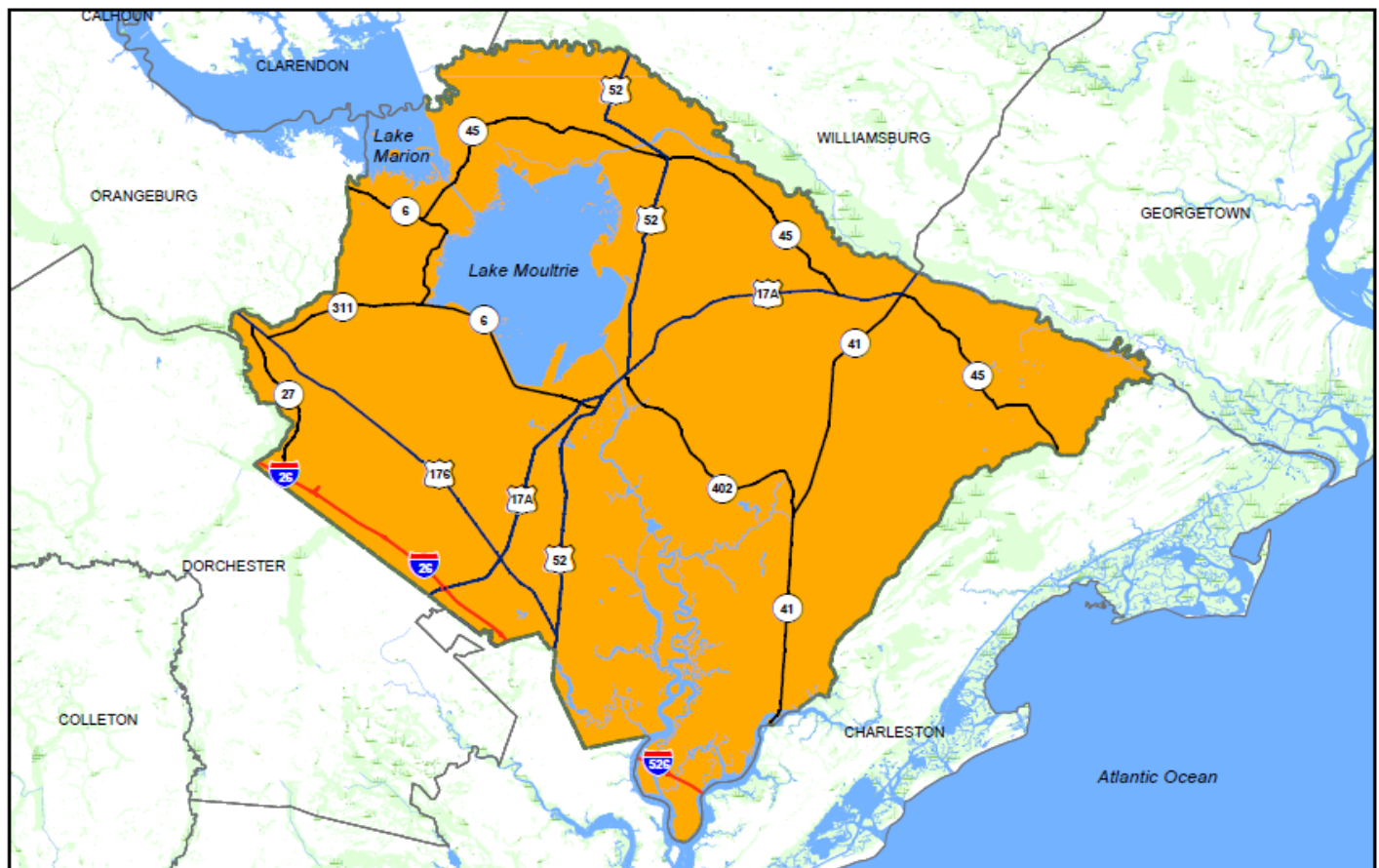
BERKELEY COUNTY, SOUTH CAROLINA

Berkeley County is one of the fastest growing counties in the state of South Carolina, with a population of over 200,000. It is a coastal county and is therefore vulnerable to hurricanes that form in the Atlantic Ocean, the Caribbean Sea, and the Gulf of Mexico. These storms have the potential to bring many hazards to both our coastlines and inland areas, including damaging winds, rip currents, storm surge, tornadoes, and inland flooding. Therefore, we encourage residents to become Hurricane Strong by preparing for and responding to these potential hazards.

In safeguarding life and property, it is imperative that you plan for a disaster before it strikes. Having a plan in place will help to alleviate panic while saving time and money. This Hurricane Guide is provided by Berkeley County Council and the Berkeley County Emergency Management Department. We hope that it serves as a useful reference in helping you to prepare this hurricane season.

IT ONLY TAKES ONE HURRICANE OR TROPICAL STORM TO CAUSE A DISASTER!

Berkeley County, South Carolina



Berkeley County GIS Department
P.O. Box 6122
Moncks Corner, SC 29461
(p) 843.719.4548 | (f) 843.719.4190
<http://gis.berkeleycountysc.gov>
Date: 5/17/2022

THE COUNTY OF BERKELEY AND ITS GIS DEPARTMENT DISCLAIMS ACCOUNTABILITY FOR THIS PRODUCT AND MAKES NO WARRANTY EXPRESS OR IMPLIED CONCERNING THE ACCURACY THEREOF. RESPONSIBILITY FOR INTERPRETATION AND APPLICATION OF THIS PRODUCT LIES WITH THE USER.

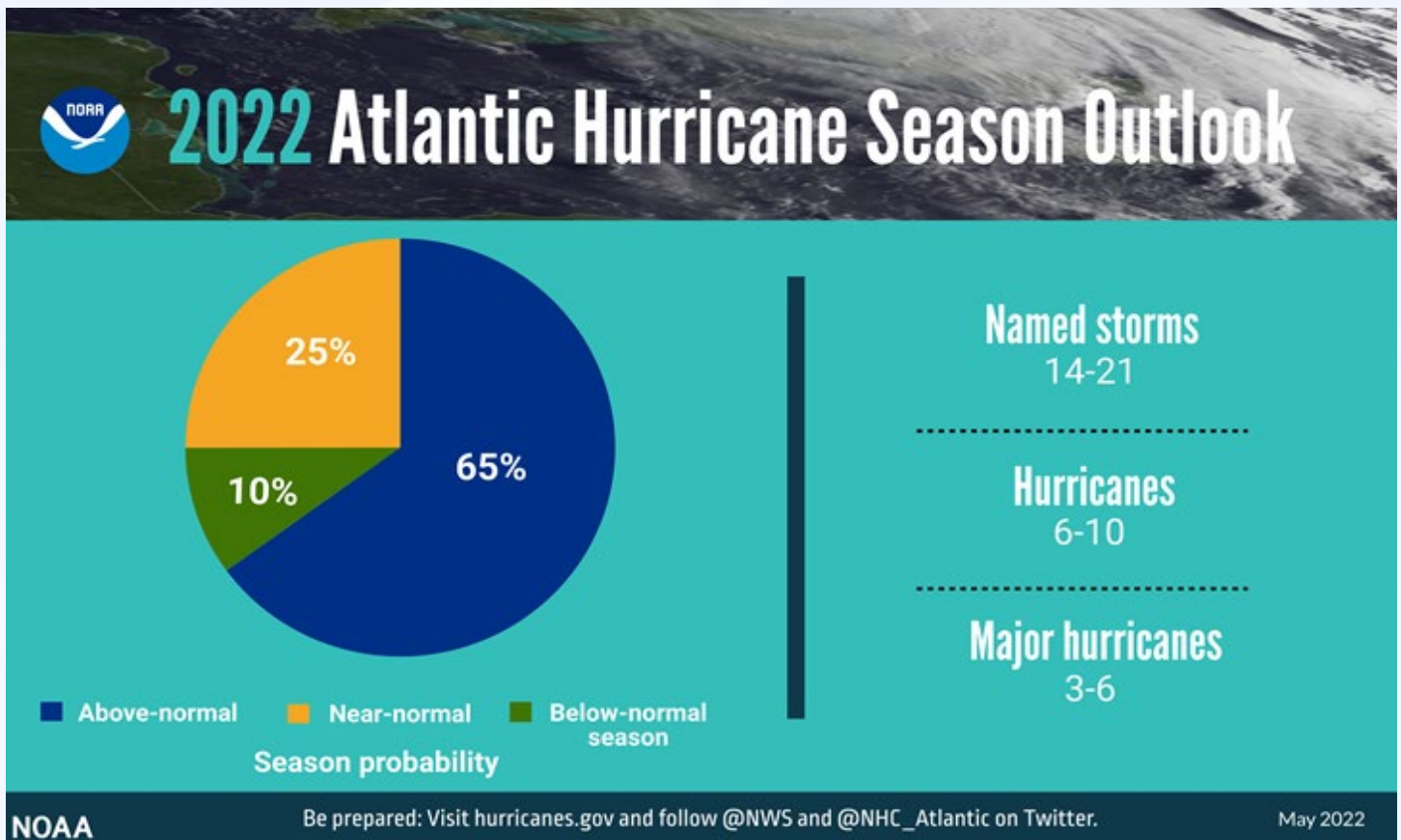
2022 HURRICANE FORECAST

If the storm name list is exhausted, a list of supplemental names will be used.

Alex AL-leks
Bonnie BAH-nee
Colin KAH-lihn
Danielle dan-YELL
Earl URR-ull
Fiona fee-OH-nuh
Gaston ga-STAWN

Hermine her-MEEN
Ian EE-an
Julia Joo-lee-uh
Karl KAR-ull
Lisa LEE-suh
Martin MAR-tin
Nicole nih-KOHL

Owen OH-uhn
Paula PAHL-luh
Richard RIH-churd
Shary SHAHR-ee
Tobias toh-BEE-uss
Virginie vir-JIN-ee
Walter WALL-tur



In its initial outlook, **NOAA's Climate Prediction Center**, a division of the **National Weather Service**, is forecasting an **above-average 2022 Atlantic hurricane season**. This is the seventh consecutive year that they've forecast an above-average hurricane season. NOAA's outlook for the 2022 Atlantic hurricane season predicts a 65% chance of an above-normal season, a 25% chance of a near-normal season and a 10% chance of a below-normal season.

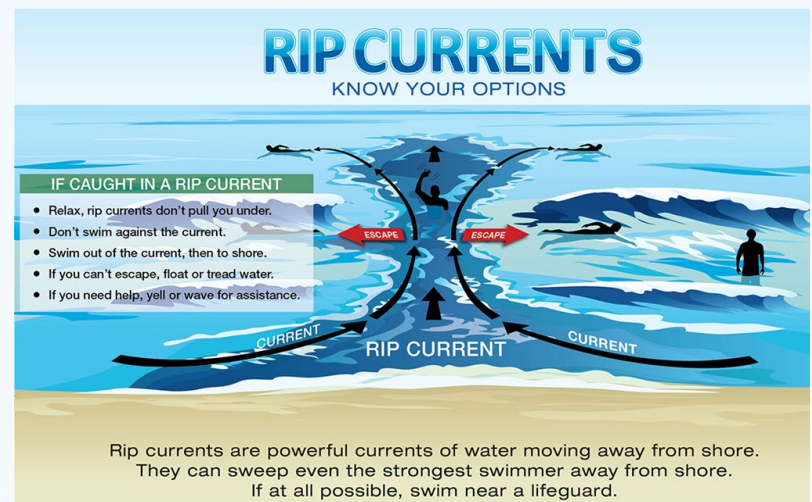
For the 2022 hurricane season, NOAA is predicting that **14 to 21 named storms** (winds of 39 mph or higher) will develop, of which **6 to 10 could become hurricanes** (winds of 74 mph or higher), including **3 to 6 major hurricanes** (category 3, 4 or 5; with winds of 111 mph or higher). NOAA provides these ranges with a 70% confidence.

KNOW YOUR HURRICANE RISKS



Inland Flooding

Tropical cyclones have the potential to produce significant hazards, but the deadliest of all is inland flooding. Widespread, torrential rain may result in destructive floods that threaten communities hundreds of miles from the coast. Flash flooding can happen within a few minutes or hours of excessive rainfall. Avoid driving through water on roadways and remember, "Turn Around Don't Drown!"



Rip Currents

Strong winds from a tropical cyclone have the potential to cause dangerous waves, which are a significant threat to residents and mariners. A rip current is a strong flow of water that runs back from the beach to the open ocean. These can occur even at large distances from the storm.

Saffir-Simpson Hurricane Wind Scale



Category 1 - 5

1 WIND: 74-95 mph
DAMAGE: Very dangerous winds will produce some damage

2 WIND: 96-110 mph
DAMAGE: Extremely dangerous winds will cause extensive damage

3 WIND: 111-129 mph
DAMAGE: Devastating damage will occur

4 WIND: 130-156 mph
DAMAGE: Catastrophic damage will occur

5 WIND: 157 mph or higher
DAMAGE: Catastrophic damage will occur

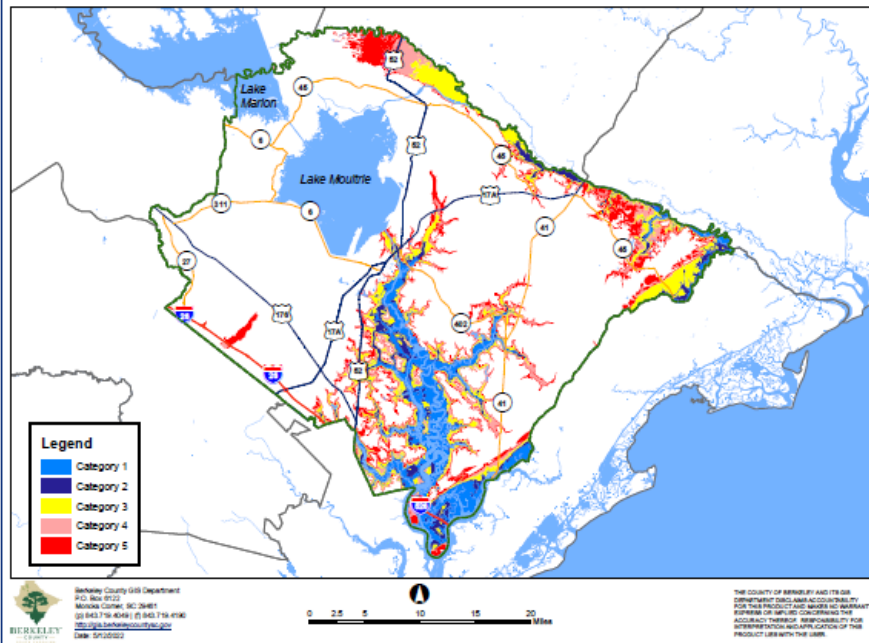


Strong Winds

The Saffir-Simpson Hurricane Wind Scale rates a hurricane's strength from 1 to 5. A hurricane's maximum sustained wind speed determines its category, which helps to estimate potential property damage.

Hurricane-force winds, 74 mph or more, can cause damage to buildings and mobile homes. Unsecured items left outside can potentially become flying missiles during hurricanes.

Berkeley County Hurricane Surge



Storm Surge

Storm surge is the increase in seawater level that is caused by the strong winds of a storm.

It can cause major damage to homes and pose a risk for drowning. While strong winds are deadly during a hurricane, water remains the greatest threat to life and property.

Enhanced Fujita Scale for Tornadoes

Six Damage Categories

EF4
WIND: 166-200 mph
DAMAGE: DEVASTATING

EF5
WIND: 200+ mph
DAMAGE: INCREDIBLE

EF2
WIND: 111-135 mph
DAMAGE: CONSIDERABLE

EF3 WIND: 136-165 mph
DAMAGE: SEVERE



spc.noaa.gov
weather.gov/tornado

EF0 WIND: 65-85 mph
DAMAGE: MINOR

EF1 WIND: 86-110 mph
DAMAGE: MODERATE

Violent
Strong
Weak

Tornadoes

Tropical cyclones have all the right ingredients to produce tornadoes, which can cause damage far away from the center of the storm.

Tornadoes produced by hurricanes are relatively weak and short-lived (typically do not exceed an EF2 on the Enhanced Fujita scale), but still pose a significant threat.

HURRICANE PREPAREDNESS



What Does WEATHER-READY look like?

Before HURRICANES

People who prepare by packing an emergency supplies kit, review their insurance policy, and follow the instructions of local officials before the storm arrives.

weather.gov



Berkeley County is vulnerable to hurricanes each year, given its proximity to the Atlantic Ocean. Therefore, residents should plan ahead by gathering supplies to last for at least several days for everyone in their household.

Ensure that the needs of each family member are being met, especially those who depend on life-saving medication. Be certain that prescriptions are filled to avoid an emergency.

When building your emergency supply kit, include basic items that your family may need in the event of a disaster.

Build A Kit

Have enough food, water and other supplies to support your needs for several days.



Basic Disaster Supplies Kit

A basic emergency supply kit for your family may include the following recommended items. These can be stored in a duffle bag and expired items should be replaced as necessary.

- ✓ Berkeley County Hurricane Guide
- ✓ Water (one gallon per person per day for several days)
- ✓ Food (at least a several day supply of non-perishable food)
- ✓ First Aid Kit
- ✓ Flashlight and extra batteries
- ✓ Cell phone with chargers and a backup battery
- ✓ Hygiene and feminine products
- ✓ Whistle (to signal for help)
- ✓ Battery-powered radio
- ✓ Baby food and supplies (at least a several day supply)
- ✓ Vitamins and prescription medication for each family member
- ✓ Manual can opener (for food)
- ✓ Cash or traveler's check
- ✓ Important documents such as insurance policies, passports, and bank account information should be stored in a waterproof, portable container.

Hurricane Preparation Checklist

- **Make an Emergency Plan.** Ensure that everyone in your household knows and understands the plan.
- Gather emergency supplies and **build a Disaster Supply Kit** that contains enough food and water for every member of your family to last at least several days.
- **Know your evacuation zone** as you may have to leave quickly. Practice with your family and identify where you will stay. Be sure to evacuate with your pet.
- **Become familiar with hurricane terminology.** A **tropical storm warning** means that tropical storm conditions (sustained winds of 39 to 73 mph) are **expected** within the next **36 hours**. A **tropical storm watch** indicates that tropical storm conditions (sustained winds of 39 to 73 mph) are **possible** within the next **48 hours**.
- **Strengthen your home.** Remove or secure all outside items such as lawn chairs and tables. Install hurricane shutters to protect your windows from strong winds, trim all trees and overhanging branches, and be certain that your gutters and drains are cleared of all debris.
- **Become Tech Ready.** Remember to keep all your devices such as smartphones and tablets charged, placing them on save battery mode. Ensure that you have backup charging devices to power your electronics. Keep a portable charger in your car.


Family Emergency Communication Plan

During a hurricane, communication issues may arise due to unreliable networks and power outages. Ensure that you and your family have a plan on how to contact each other and where to meet in case of an emergency.

Due to the overload of phone lines, text messages are often more reliable and faster to send than making a phone call. Remember that long distance calling may be easier than making a local phone call. Try to always contact your family members through their social media accounts. Designate someone outside of your community or in another state to act as a central point of contact for your family to be reunited.

Once the Family Emergency Communication Plan is completed, make certain that every member of your household has a copy. Practice the plan.

Plan for Your Pets





PLAN FOR YOUR PETS

Visit [ready.gov/animals](https://www.ready.gov/animals)

Not all shelters accept pets

Plan in advance so your pets are taken care of

 
weather.gov/hurricanesafety

Pets are an important part of the family, so plan on taking your pets with you.

- Instead of shelters, locate pet-friendly hotels, or ask to stay with friends and family.
- Plan to keep your pet safe if you become separated by having them microchipped, or coordinate with neighbors, friends, or relatives to ensure that someone is available to care for or evacuate them if you are not able to do so.
- Verify that your pet's immunization records are current and on hand.
- Be sure that you have a carrier or cage for each pet.
- Build a Ready Kit for your pet to include collar with ID tag, leash, medicine, health records, toys, several days of food and water, bed, and clean-up supplies.

Watch vs. Warning



A watch means that ingredients are in place for severe weather to develop. We have all of our ingredients to make the tacos.



A warning means severe weather is happening now and you should take action. Time to eat!



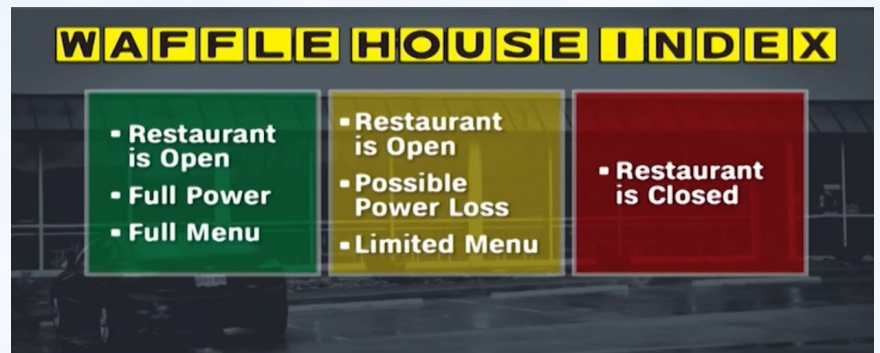
TACO WATCH



TACO WARNING

The Waffle House Index

The Waffle House Index is an informal measurement of the severity of a storm and its effect on the community. If the situation is bad, the restaurant runs on a limited menu. If the situation is REALLY bad, then the restaurant is closed.



OPCONs

To maximize advance warning, Berkeley County has established a system of Operating Condition (OPCON) Levels on a scale from 3 to 1. Each OPCON level is declared when a pre-determined set of criteria has been met.

OPCON	LEVEL OF READINESS
Three	Day-to-day operations.
Two	Possible or pending emergency or disaster situation.
One	Disaster or emergency situation is occurring. Emergency response activities are ongoing.

UNDER A HURRICANE WATCH

A **hurricane watch** indicates that hurricane conditions (sustained winds of 74-mph or higher) are **possible** within the specified area. A watch is issued **48 hours** in advance of the anticipated onset of tropical-storm force winds. During a hurricane watch:

- ✓ Review your evacuation plan with your family in case a hurricane warning is issued.
- ✓ Listen closely to instructions from local officials.
- ✓ Ensure that your gas tank is full. Have an extra can of gas to avoid being stranded on the highway if evacuating.
- ✓ Refill your prescription medications.
- ✓ Secure buildings by closing and boarding up windows.
- ✓ Anchor and stow your boat.
- ✓ Clean out your drains and gutters and trim all overhanging branches.

UNDER A HURRICANE WARNING

A **hurricane warning** means that hurricane conditions (sustained winds of 74-mph or higher) are **expected** somewhere within the specified area. A warning is issued **36 hours** in advance of the anticipated onset of tropical-storm force winds. During a warning:

- ✓ Monitor radio and television for the latest official updates and instructions.
- ✓ If an evacuation order is given, comply immediately.
- ✓ Do not use kerosene lamps and candles. Have flashlights and batteries ready for use.
- ✓ Park your car in sheltered locations or on higher ground, such as city garages.
- ✓ Store valuables in a safe place.
- ✓ If power is lost, unplug all major appliances to avoid a power surge when the electricity is restored.

UNDER AN EVACUATION ORDER

If the Governor orders an evacuation:

- ✓ Leave immediately and bring your Emergency Kit.
- ✓ Unplug ALL appliances and turn off the power and water.
- ✓ Lock and secure all doors and windows.

KNOW YOUR ZONE

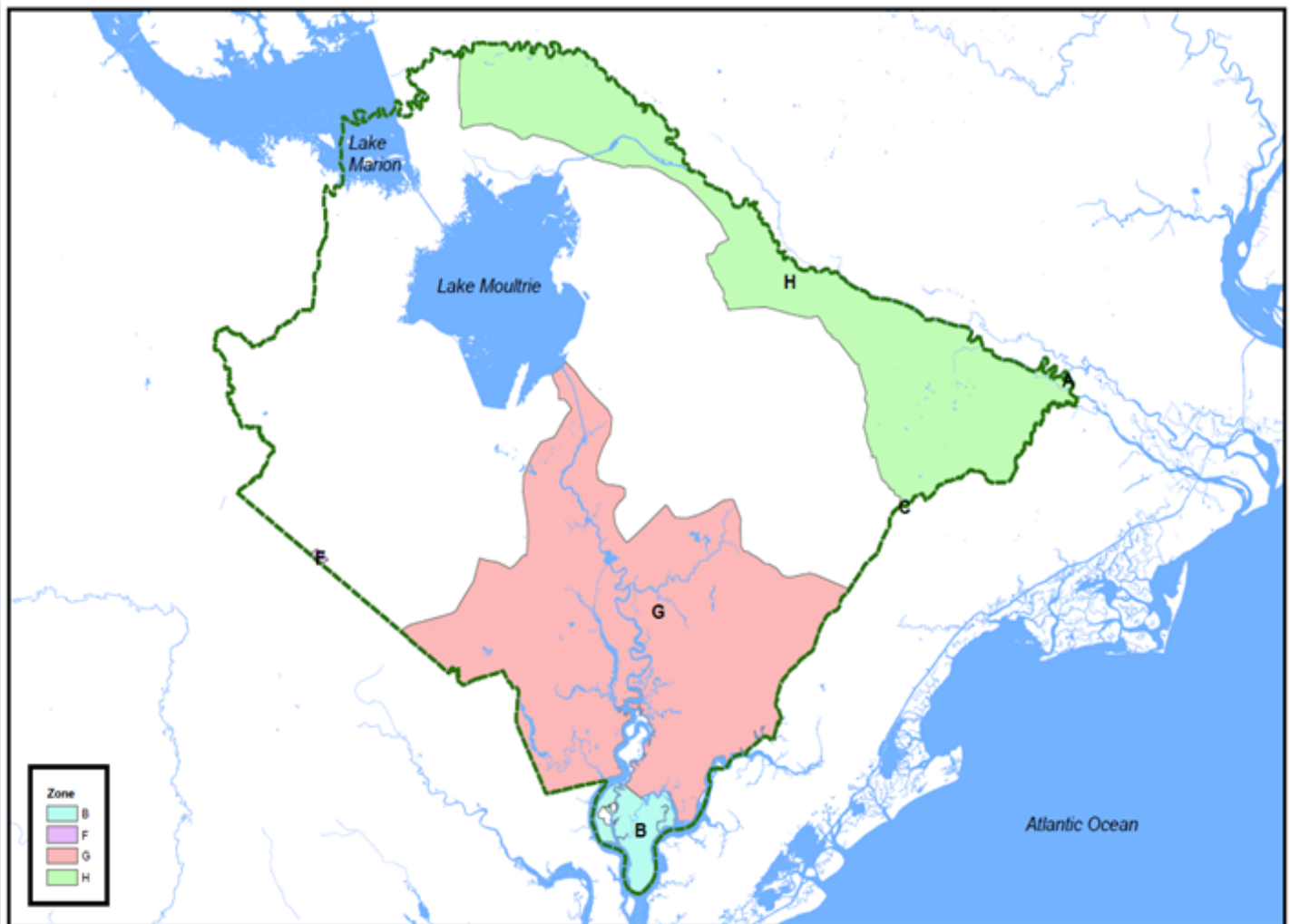
An **evacuation order** means that you are at risk and need to leave immediately. Orders are expected to be carried out in a timely and orderly manner. State and local officials will conduct evacuation activities according to these designated zones, so it is crucial that you are familiar with your zone. Follow the instructions from local emergency managers, who are working in conjunction with state and local agencies and stakeholders. Monitor local media for specific instructions.

This map of Berkeley County highlights areas that are most vulnerable to storm surge. In some cases, due to storm conditions, evacuation routes may be adjusted. Stay informed.

Prior to leaving your home, take pictures as you may need to contact your insurance company regarding damage. Plan on how you will leave and where you will stay. Ensure that you choose a place that is not in the direct path of the hurricane. Have at minimum two routes that you can use to evacuate.

Information regarding South Carolina evacuation routes and road conditions may be found at <https://www.511sc.org/>.

Berkeley County Evacuation Zones



Berkeley County GIS Department
P.O. Box 6122
Monks Corner, SC 29461
(p) 843.719.4049 | (f) 843.719.4190
<http://gis.berkeleycountysc.gov>
Date: 5/16/2022



THE COUNTY OF BERKELEY AND ITS GIS DEPARTMENT DISCLAIMS ACCOUNTABILITY FOR THIS PRODUCT AND MAKES NO WARRANTY EXPRESS OR IMPLIED CONCERNING THE ACCURACY THEREOF. RESPONSIBILITY FOR INTERPRETATION AND APPLICATION OF THIS PRODUCT LIES WITH THE USER.

EVACUATION ROUTES & SHELTER INFORMATION

Plan to Evacuate

Plan on knowing where you will go once an evacuation order has been issued. Familiarize yourself with all main and alternate routes out of your area.

- I-26 is the primary evacuation route.
- US-176 and US-52 and I-526 are secondary evacuation routes.
- US-17A, SC6, SC41, SC402 and SC45 are supporting routes.

Shelter Information

Berkeley County Emergency Management Department partners with Berkeley County School District, the Department of Social Services, and the Red Cross to provide emergency shelters during a storm. If shelters are needed, they will be announced prior to the onset of the storm.

If you plan to stay in a shelter, remember to bring your disaster supply kit, along with any needed medication.

Be sure to monitor the news, as well as our county's website and social media pages for the latest information regarding shelters.

EVACUATION CHECKLIST



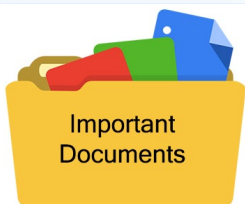
FOOD/WATER

Have enough non-perishable food and water to last at least several days for your family. Remember to pack anything specific to your family's needs.



HYGIENE/SANITATION

Practicing good hygiene can stop the spread of bacteria and infectious disease. Be sure to pack toothpaste, soap, toilet paper and diapers as shelters may not have these items on hand. Include a change of clothing for each family member.



CRITICAL DOCUMENTS

Place any important documents in a waterproof container to help keep them dry and easily accessible.



MONEY

If power is lost, ATMs may not be operational. Remember that you will need money, so confirm that you have cash on hand.



MEDICAL NEEDS

Be equipped to tend to any current or unexpected medical conditions your family may have. Ensure that all prescriptions are filled.



FIRST AID

Be prepared for minor injuries by including gauze, bandages, latex gloves, antiseptic and painkillers in your first aid kit.

Be Informed

During a disaster, emergency messages are sent out by state and local governments and the National Weather Service via television, radio, social media, and cellular phone alerts. Ensure that you have a way to monitor the latest severe weather conditions and receive emergency alerts. Berkeley County will send out notifications to the public via the **reverse 911 notification system** and our official social media pages. Be aware of the **Emergency Alert System (EAS)** and **Wireless Emergency Alert (WEA)**, which require no sign up.

TRACK UPDATES

Online: <https://berkeleycountysc.gov/>

Facebook: Berkeley County Government |

Facebook

Instagram: [@berkeleycountyscgov](https://www.instagram.com/berkeleycountyscgov)

IMPORTANT CONTACTS

Berkeley County Emergency Management Department
<https://berkeleycountysc.gov/dept/epd>

S.C. Emergency Management Division (SCEMD)
scemd.org

S.C. Department of Public Safety
Emergency Traffic Network | <https://scdps.sc.gov>

National Hurricane Center (NHC)
hurricanes.gov

The Official Website of the State of S.C.
sc.gov

S. C. Department of Insurance
doi.sc.gov • 803-737-6160 • 803-768-3467

American Red Cross
redcross.org • 1-866-438-4636

Federal Emergency Management Agency (FEMA)
fema.gov • ready.gov

Salvation Army
doingthemoostgood.org • 704-522-4970

S.C. Department of Transportation
scdot.org • 855-GO-SCDOT • 855-467-2368

Follow guidance
from local authorities.



COVID-19

The coronavirus disease (COVID-19) is an infectious disease that is caused by the SARS-CoV-2 virus. Infected people have experienced symptoms ranging from mild to severe. **Stop the spread and get vaccinated to protect yourself and your family.**

If you need to evacuate, take steps to protect yourself and your family from COVID-19. Include in your emergency kit items such as soap, hand sanitizer, rapid antigen at-home test kits, sanitizing wipes and multiple, well-fitting masks for everyone in your household. Maintain at least 6 feet of space between you and individuals who are not in your household.

Continue to follow all COVID-19 protocols from emergency officials.

More information can be found at:
Your Health | COVID-19 | CDC

REVERSE 911 SYSTEM

Berkeley County residents can now utilize the reverse 911 system to receive emergency notifications and severe weather warnings.

The system is used to alert citizens and businesses to the risk of danger by sending a recorded message or text message to registered cellphones within Berkeley County. The reverse 911 messaging notification system warns of impending severe weather within seconds of being issued by local officials or the National Weather Service.

To register, you must use the Self Registration Portal on the Berkeley County website (<https://berkeleycountysc.gov/>) to enter your information.

ADDITIONAL RESOURCES

- ✓ To receive alerts, citizens can also download the **FEMA App** to receive real-time alerts from the National Weather Service.
- ✓ Know your evacuation routes and share your location with emergency contacts by downloading the S.C. Emergency Manager App.
- ✓ To ensure that you are protected from expensive damages during this Hurricane Season, explore policy options at floodsmart.gov.
- ✓ To report any damages from a storm, citizens of Berkeley County should contact the Emergency Management Department, Citizen Call Center or 911.
- ✓ It is crucial to have businesses that provide essential services open and working. Help your business survive a hurricane by accessing FEMA's hurricane playbook for businesses at Business | Ready.gov.

HURRICANE PREPAREDNESS



MAKE A PLAN



BUILD A KIT



BE INFORMED

INSURANCE CHECKUP

Hurricane Preparedness

GET AN INSURANCE CHECKUP



Check in with your insurance agency before hurricane season. Remember that flood insurance must be obtained separately. Prepare your home and vehicles according to your policy. Know where your insurance documents are located and take them with you if evacuating. Visit [floodsmart.gov](https://www.floodsmart.gov) for more.



Check with
your agent



Keep documents
with you



Know your
policy



Consider flood
insurance

[weather.gov/hurricane](https://www.weather.gov/hurricane)



Prior to a disaster occurring, call your insurance company and request an insurance checkup to ensure that you have enough homeowner's insurance to repair or replace your home. This insurance checkup should include boat and car coverage, as necessary. Remember, flooding is NOT covered by your standard homeowner's insurance.

Both renters and homeowners will need a separate policy for flooding, which is available through your insurance company or agent. Remember that flood insurance requires a 30-day waiting period, so act now.

Flooding is a very common natural disaster, and flood damage can be quite expensive, so always know where your insurance documents are located and take them with you if you are told to evacuate.

RE-ENTRY INFORMATION

If you evacuated, portions of the county may be inaccessible, even after the official evacuation order has been lifted. Therefore, keep monitoring the local radios, television, and trusted social media accounts for accurate and timely information.

Returning Home After a Hurricane

- ✓ When cleaning up, be careful and wear protective clothing or masks if cleaning mold or other debris.
- ✓ Do not touch downed electrical wires or equipment that is wet or in pooling water.
- ✓ Do not walk around in flood waters, which can contain dangerous pathogens that cause illnesses, debris, waste, and wildlife.
- ✓ Take photos of any property damage and contact your insurance company for assistance.

Berkeley County Emergency Management Department
1003 US Highway 52, Moncks Corner, SC 29461

(843) 719-4166 | [Emergency Management – Berkeley County Website \(berkeleycountysc.gov\)](https://www.berkeleycountysc.gov)