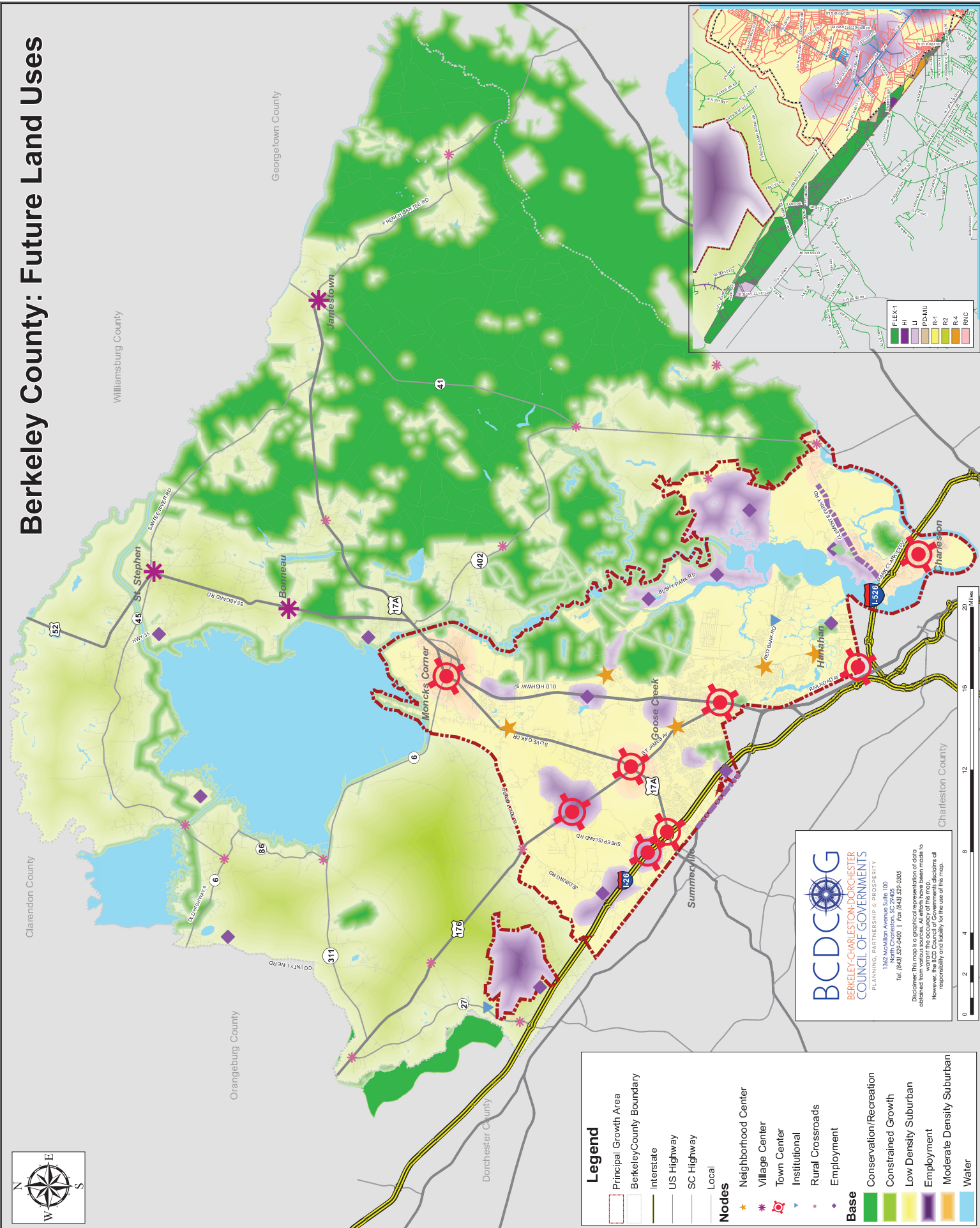


Berkeley County: Future Land Uses

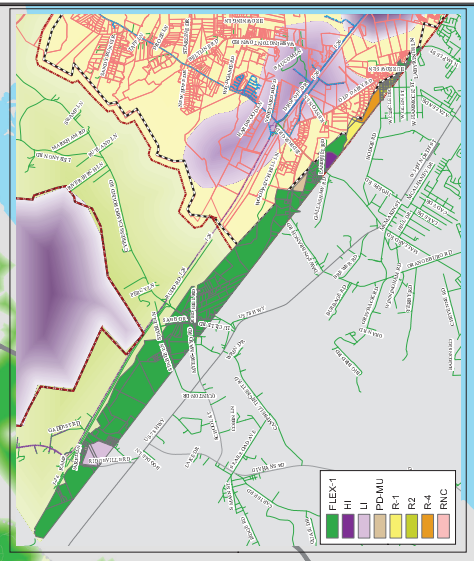


Legend

- Principal Growth Area
- Berkeley County Boundary
- Interstate
- US Highway
- SC Highway
- Local
- Nodes
 - Neighborhood Center
 - Village Center
 - Town Center
 - Institutional
 - Rural Crossroads
 - Employment
- Base
 - Conservation/Recreation
 - Constrained Growth
 - Low Density Suburban
 - Employment
 - Moderate Density Suburban
 - Water

BCDCOG
 BERKELEY-CHARLESTON-DORCHESTER
 COUNCIL OF GOVERNMENTS
 PLANNING, PARTNERSHIP & PROSPERITY
 1362 McMillan Avenue, Suite 100
 North Charleston, SC 29505
 Tel: (843) 327-0460 | Fax: (843) 327-0305

Disclaimer: This map is a graphical representation of data obtained from various sources. While every effort has been made to ensure the accuracy of the information, the BCD Council of Governments disclaims all responsibility and liability for the use of this map.



Clarendon County | Williamsburg County | Georgetown County | Orangeburg County | Dorchester County | Charleston County